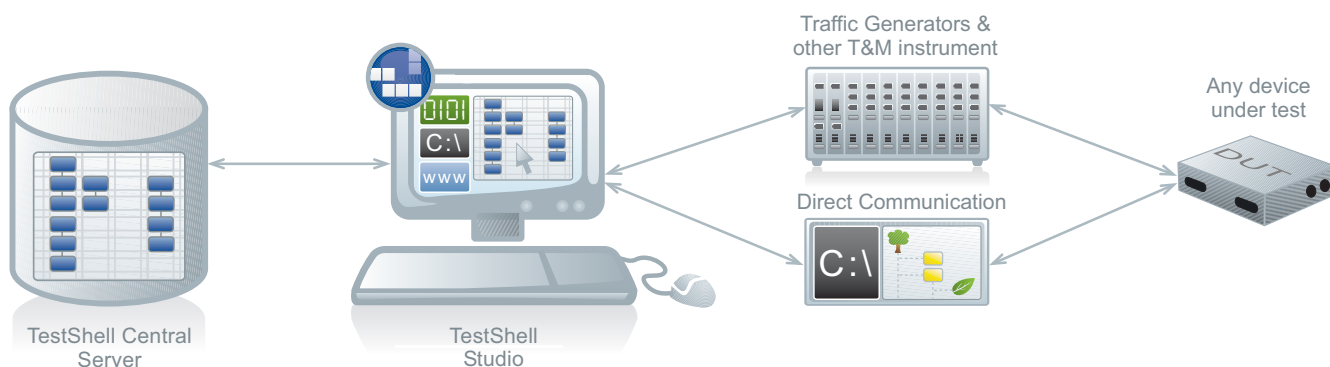




# TestShell Studio

Advanced Drag-&-Drop, Multi-Sequence Test Creator

TestShell Studio is an advanced, GUI-based test editor enabling fast development of test scenarios without requiring programming skills. All technologies essential for automating today's complex testing environments are integrated in the application, enabling test creation in a fraction of the time of traditional tools. Studio is a TestShell client, available in the TestShell Team and Enterprise Editions.



- Drag-&-drop user interface for quick **programming-free** test sequencing
- Built-in **parallel execution** and coordination with a rendezvous support
- Simple creation of complex **event-driven** testing scenarios
- Unified test, regression and device-under-test (DUT) management in one application
- Integral support of a wide range of **network protocols**
- Built-in integration of **script languages** and **software resources** for full utilization of the existing infrastructure
- Powerful yet simple parsing and analysis rules act as building blocks for easy construction of elegant scenarios
- Project sharing merging and test reusability

Highlights

## Features and Benefits

### *Enjoy a truly user-friendly graphical software*

- Complex tests may be created by test engineers without programming skills
- Learning curve is drastically cut down
- Flowchart-like display of tests allows at-a-glance comprehension
- Editing and updating of tests with minimal effort
- Saving of configurations and templates into "favorites" for quick reuse and reference

### *Make complex testing simple*

- Coordination of parallel actions in an intuitive visual manner
- Simple event driving and linking
- Built-in logic and test-flow control tools allow easy creation of generic and reusable complex tests
- Complete marshaling of information within and between tests using a powerful variable engine
- Trivial capturing, editing and automation of terminal actions

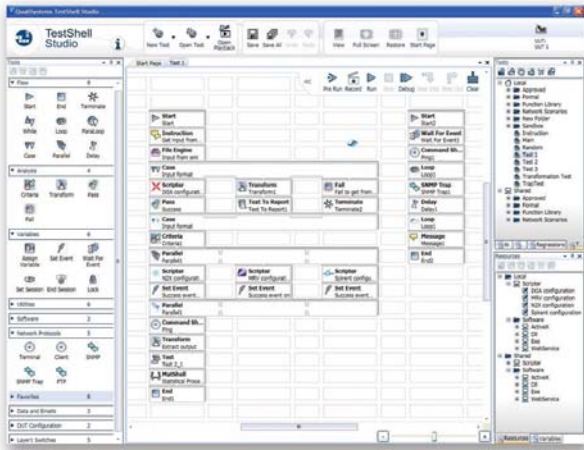


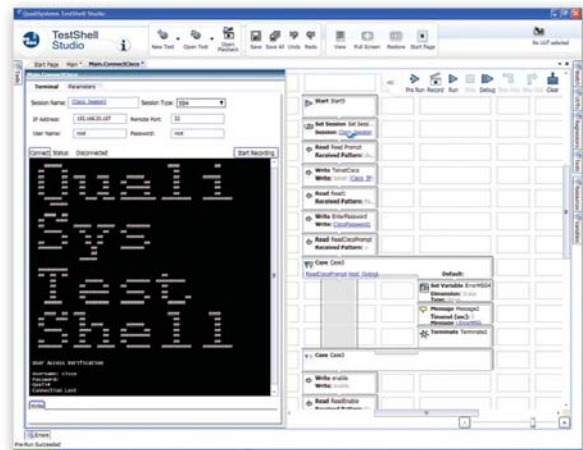
chart-like *event-driven* test scenarios with *parallel execution*

## Manage your tests plans and resources

- Regressions (test plans), tests and functions are stored in a central server for easy cross-organizational sharing
- All test assets are managed in a flexible hierarchy over a network environment
- Linking of regressions and tests to the DUT for tracking history and inheriting test parameters while supporting "many to many" relationships
- Loading of script libraries and software tools to the central database for immediate use by "everyone" and quick updating including resource dependencies
- Updates, edits and other changes can, by definition, affect all dependent tests and regressions

## Leverage built-in support of a wide variety of technologies

- Protocols include SNMP, FTP, SFTP, TFTP, SSH, Telnet, TCP, UDP, HTTP and more...
- Scripts include TCL, Python, Perl, JavaScript, VBScript, batch file and more...
- Easy interfacing with third-party tools including sniffers, analyzers, recorders, etc.
- Control of all networking equipment from various vendors including traffic generators, switches, routers, load testers and others



Easy automation of telnet session

## Collect results and analyze data

- All acquired results are loaded by definition to the central database
- Customizable reports are automatically generated
- Simple code-free parsing tools allow creation of parsing macros with immediate feedback
- Built-in mathematical and statistical tools allow quick and advanced result analysis
- Simply defined pass/fail and validations criteria with multiple conditions support
- Data collection includes actions and results allowing complete understanding and identification of errors
- Built in watchers allow tracking and debugging of all values and updates in design and execution

## TestShell

TestShell is an end-to-end test automation solution compatible for testing virtually any hardware, device or embedded system. While providing code free **test authoring**, automatic **test execution**, advanced **test management** and comprehensive **test reporting and analysis**, TestShell helps equipment manufacturers and service providers to improve product quality, shorten time to market and significantly reduce capital and operational expenditures.